

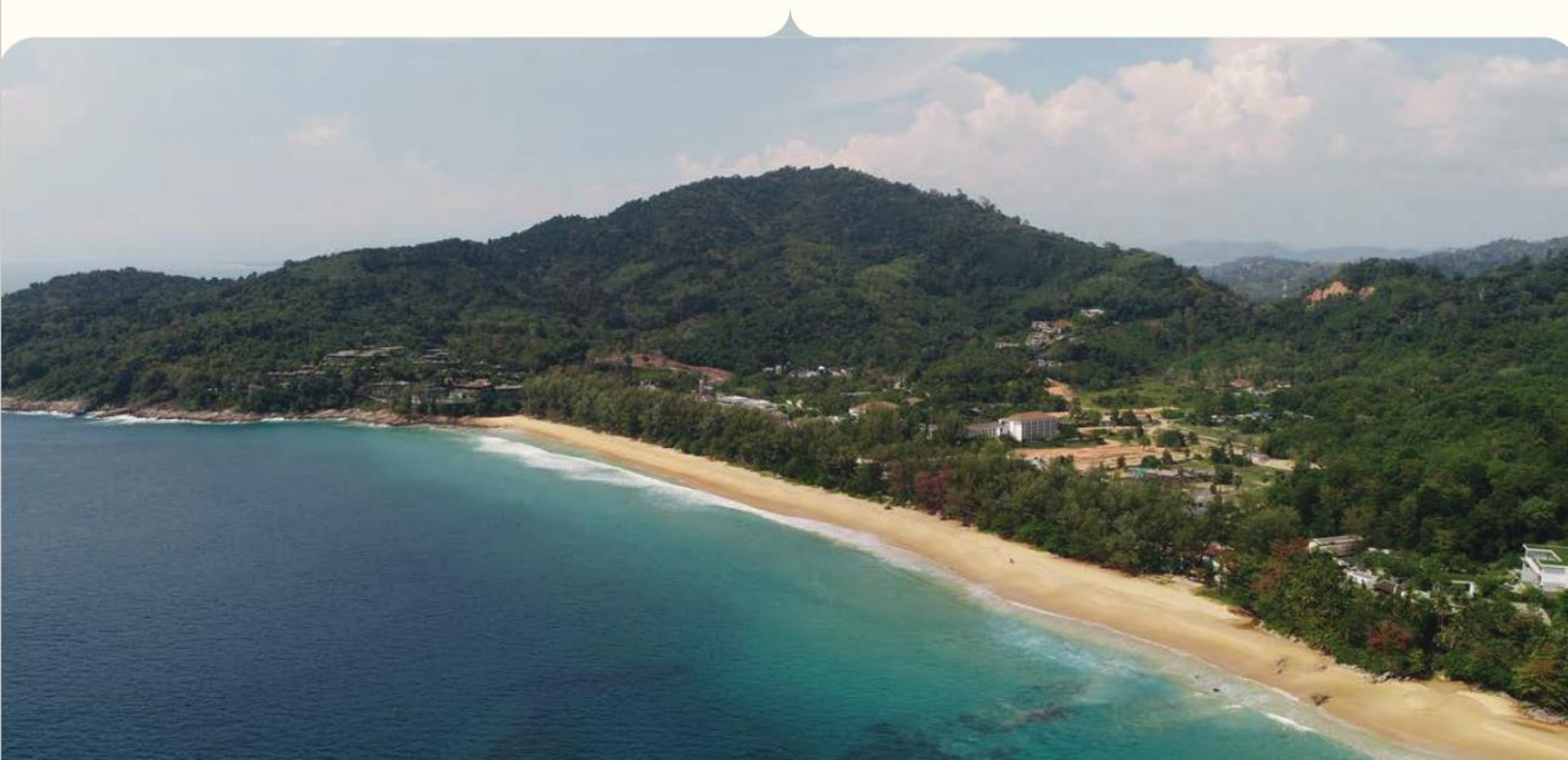


SEA HEAVEN
PHUKET NAITHON

NAI-THON BEACH



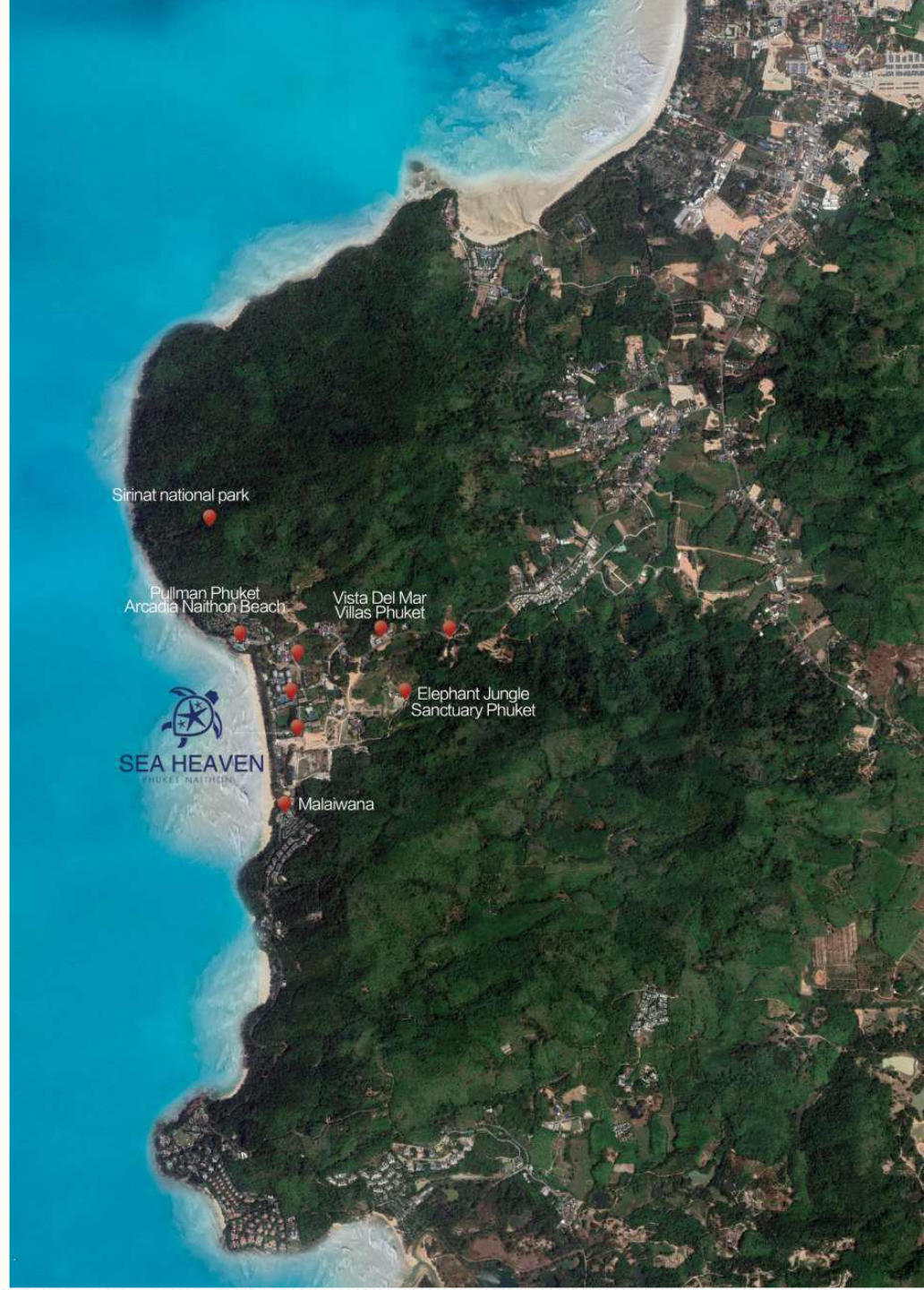
Naithon Beach is one of most beautiful beaches on the west coast of Phuket, far from crowded areas. The beach is 1.4 kilometers long, under the protection of Sirinat National Park. Naithon Beach is famous for luxury properties and 5 star hotels.



Living with Nature

Welcome to the beautiful paradise with gorgeous ocean in front of you and majestic mountains surrounded by Sirinat National Park.

Sea Heaven Naithon offers a quality lifestyle and ease of living which truly compliments its beach front location.



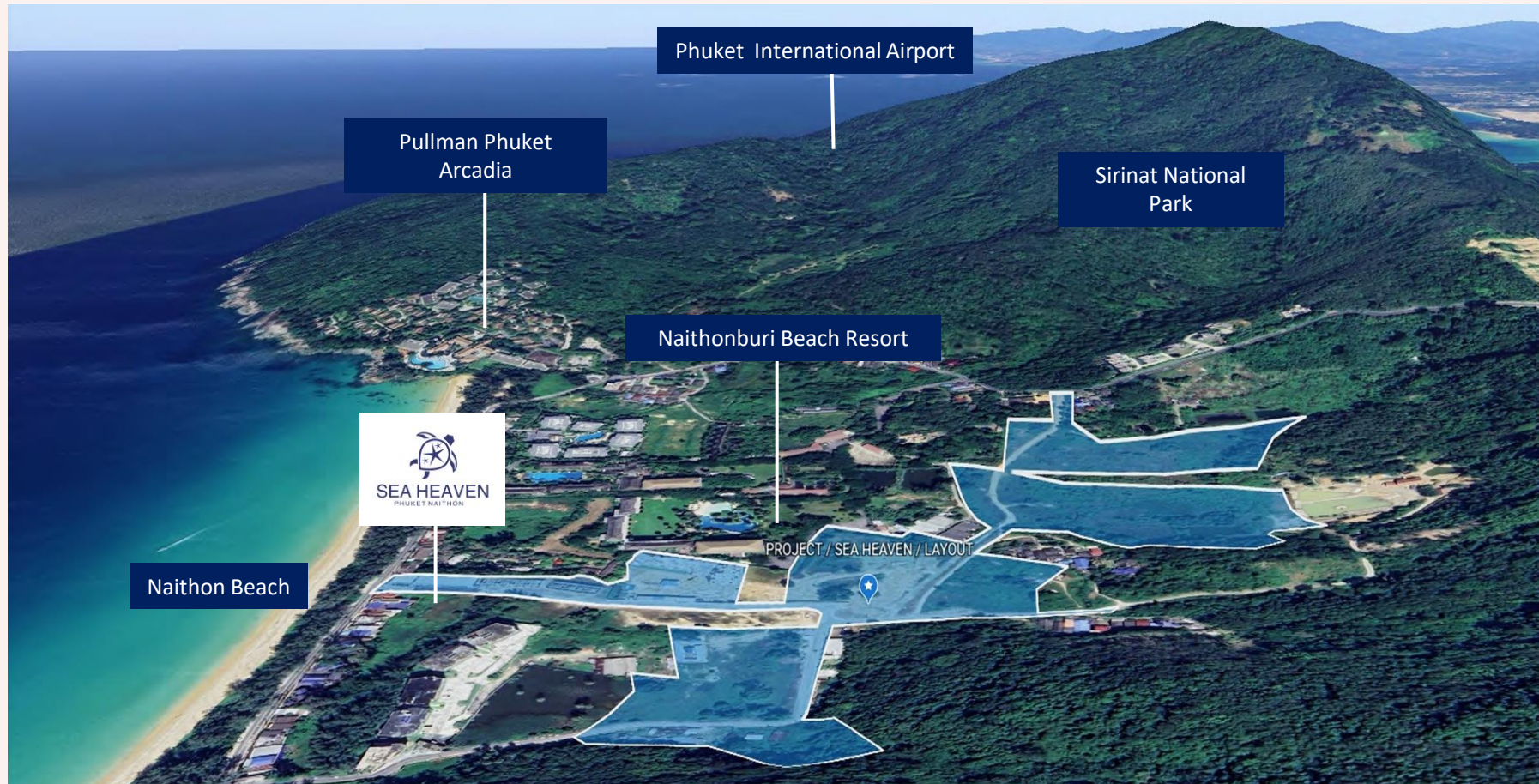
The epitome
of Location,
Luxury
& Lifestyle



The biggest mixed-use project in Phuket with condominiums, luxury villas, hotels, shophouses, community mall, sport club, MICE center as well as medical wellness.

PHUKET BEACH





1. Naithon Beach	1 minute walk	8. Central Porto De Phuket	17 minutes
2. Banana Beach	5 minutes	9. Maikhao Beach	20 minutes
3. Naiyang Beach	7 minutes	10. Surin Beach	25 minutes.
4. Airport	13 minutes	11. Robinson Lifestyle	25 minutes
5. Blue Canyon Country Club	15 minutes	12. Phuket International Hospital	.
6. UWC International School	17 minutes		
7. Boat Avenue	17 minutes		



The biggest mixed-use project in Phuket with condominiums, luxury villas, hotels, shophouses, community mall, sport club, MICE center as well as medical wellness.

Sea Heaven offers a unique opportunity not only live the beach lifestyle of your dreams, but also investment program that give you long term passive income.

MASTER PLAN



Project 5 years roadmap on total 62 Rai area or approximately 100,000 SQM



PHASE I

Project Type:	Commercial Shophouse
Number of unit:	23 units
Project area :	3.14 Rai
Unit type :	3 stories 4 bedrooms
Ownership:	Leasehold

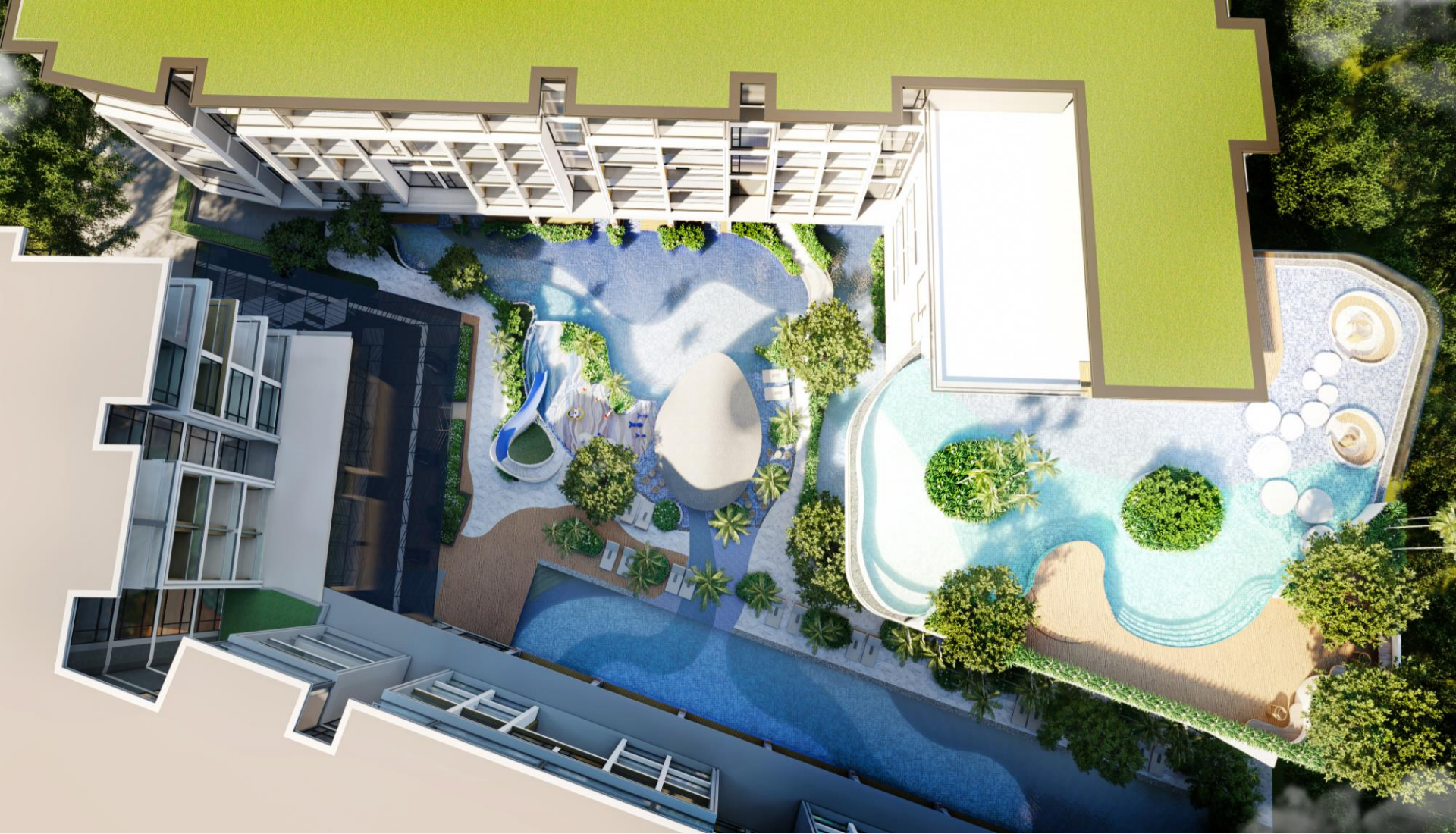




PHASE 2

Project type: Condominium 5 Stories
Number of buildings: 2
Number of units: 251 Units
Project area : 4.31 Rai
Managed by : Wyndham Hotel Group
Ownership: Freehold/ Leasehold

Unit type :	
Superior	30 – 37 SQM
Deluxe	40 – 43 SQM
Junior Suites	50 - 55 SQM
Suites	60 – 69 SQM
Family Suites	74-79 SQM



FACILITIES AND AMENITIES

Lobby Hall
24 hours receptions service
2 All day dining restaurants
Parking
Fitness center

Lab pool
Lagoon pool
Kid's Pool
Shallow pool
Sky Pool
Pool bar

Tropical garden
Hotel service
Shuttle service to airport





TYPE A



TYPE A3

PHASE 2.1

ROOMTYPE STUDIO, 1 BED, 2 BED
37-70 SQ.M.

PHASE 2.2

ROOMTYPE STUDIO, 1 BED, 2 BED
30-79 SQ.M.



Wyndham Garden combines excellent service, best-in-class amenities, and technology that delivers the efficient and welcoming elements that guests want. With a lens on the little details, and a focus on delivering stress-free, easy travel, guests find peace of mind when traveling for business or pleasure.

On a percentage basis, Wyndham Garden is Wyndham's fastest growing brand over the last 5 years, growing where Generation X and Millennial travelers want to be

INVESTMENT MODEL

MANAGEMENT SCHEME





Imagine a lifestyle which
you've always dreamt of.





More to come
in upcoming
phases

Pool Villas and MICE center





Upcoming phase
Park and sport club





Upcoming phase
Community mall

Upcoming phase
Medical Wellness



SUCCESS STORY



SAMPENG 2

LOCATION : SATHON - KALAPAPRUEK



MIAMI BANGPU

LOCATION : BANGPU, SAMUT PRAKARN



JSP CITY SERIES

- SUKHUMVIT PRAKSA
- RANGSIT - KLONG 1
- TIWANON, SRIRACHA,
- BANGPU
- J-TOWN
- J GRAND
- J-SQUARE
- J-VILLA
- J-LEGEND
- TULIP SERIES
- TULIP SQUARE
- TULIP BLISS TOWN,
- TULIP SHOPPING MALL
- J CONDO
- MIAMI MALL AND BAZAAR
- SAMPENG 2 MARKET



WYNDHAM
REWARDS[®]
You've earned this.™

WYNDHAM
GARDEN[®]